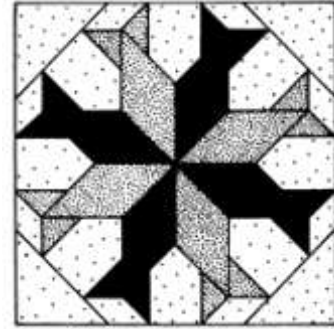




the Bee Line



November 2007
Issue 4

NEXT MEETING:
October 13th, 2007
Trinity Evangelical Lutheran Church
26 W. Commerce Street
Chambersburg, Pennsylvania
12:00 P.M. Social Gathering
1:00 P.M. Business Meeting & Program
WEB PAGE
www.chambersburgquiltguild.org

Chambersburg Quilt Guild, Inc.
Officers 2007-2008

President

Janet Hartman

Vice President

Leilani (Lani) Brechbill

Treasurer

Grace Pace

Recording Secretary

Sandy Effland

Corresponding Secretary

Marge Schweitzer

Programs

*Missy Molino**

Helen Lagasse

Nancy Bender

Membership

Linda Ferraro

Library

Fran Chamberlain

Judie Svoboda

Hospitality

*Donna Jones**

Linda Walter

Patty Coldsmith

Sunshine

Lee Hively

Facilities

*Kathryn Grabowski**

Dagmar Unger

Donna Widney

Publicity

Annamarie Schwartz

Historian

Mary Barnhart

Laura Morningstar

November program

Sherry Whitford will be our lecturer for our November meeting this month. She will be lecturing on "Fun with Fusibles - the Real Reason to Own an Iron!"

You may remember Sherry as the quilt shop owner at Williamsburg Soap & Candle in Virginia. Since retiring from managing the shop, she has taken on teaching, making more quilts, road trips with friends, expanding her fabric collection and adding new techniques to her quilting know-how.

We hope you can join us for this enjoyable program!

October 13, 2007

Chambersburg Quilt Guild Inc.
Meeting Minutes

President Janet Hartman, who welcomed 92 members and guests, called the meeting to order at 1 PM.

We all enjoyed a very well presented program as well as informative. Cheryl Weiderspan of Homestead Specialities is very knowledgeable, funny and entertaining. Ladies if you were not present you missed a great program.

The secretary minutes were approved from a motion by Lois Young and seconded by Ruth Mollack. Both treasurers' report (the general checking and documentation) were reviewed and filed for audit.

Membership directories were distributed. The budget was discussed. Please if you are a chairperson of a committee please remember to stay within your allotted budget. If you need additional funds, you must bring the request before the board for a decision before spending. A motion to affirm the budget was made by Peg Buck and seconded by Cindy Bender. Motion was approved.

A check for half the proceeds from the 2006-2007 raffle quilts was presented to the documentation committee. Nominees for the 2007-2008 raffle quilt proceeds are open for suggestions at this time. The only nominee to date is the Franklin County Documentation Project.

A reminder about the yellow folder containing the ordering sheets for books from AQS. Please see Cindy Bender.

The challenge block for this year is "ATTIC WINDOWS". Please see Chris Mieczkowski for additional information. Christmas block exchange is due Nov. or Dec. at the latest. Baby quilts will be donated sometime in the spring of 2008. Please see Amy Hetz. Doll quilts are due in November. Please see Becky Dopp. The doll quilts are to be at least 16 inches square. Remember Lee Hively is our Sunshine representative. See her if you know of anyone needing a little cheer.

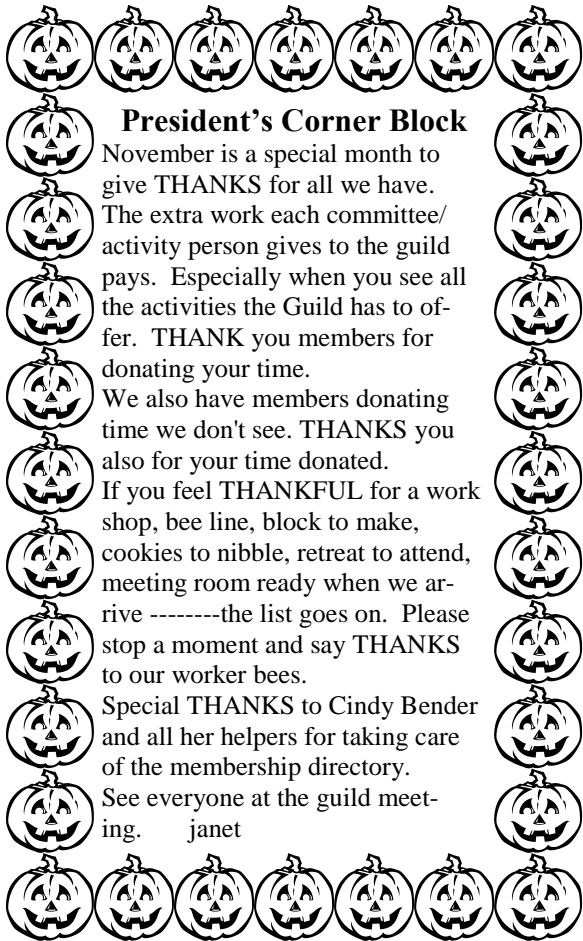
Remember to change you zip code if you have recently had your code changed.

Ladies of the Lake Quilt Guild located in New Hampshire is interested in becoming our sister quilt. There is a sheet if you are interested in corresponding with this guild.

Please visit our newly revamped library. Many thanks are due our library committee.

Hope all of you had fun on your road trip. Our meeting concluded with show and tell. Megan Music made a motion to adjourn and Lee Hively seconded the motion.

Respectfully submitted, Sandy Effland, Recording Secretary



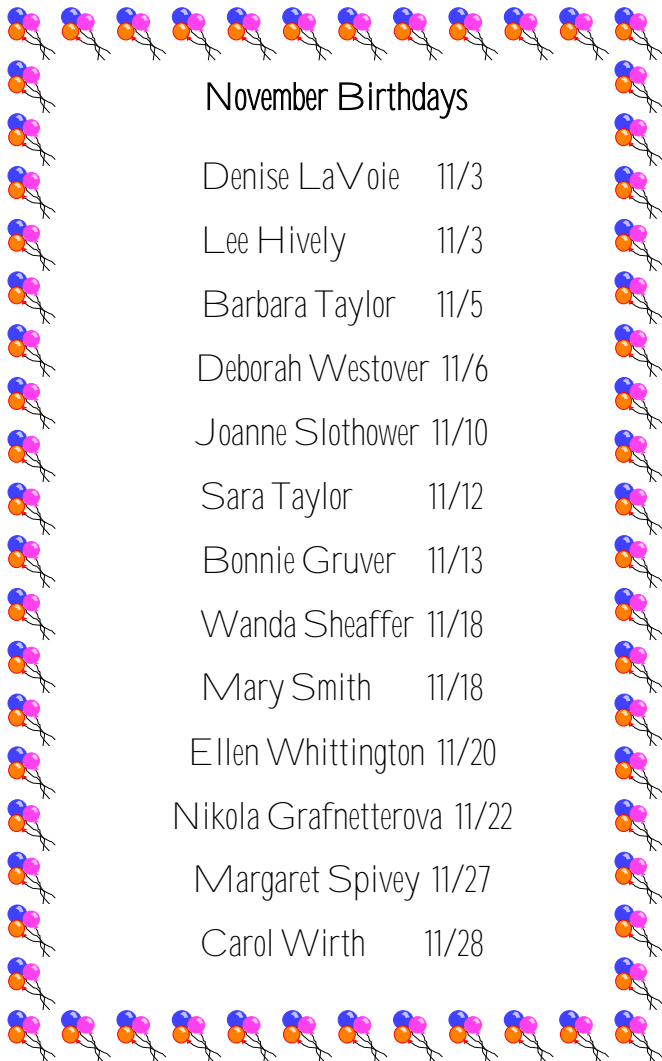
President's Corner Block

November is a special month to give THANKS for all we have. The extra work each committee/activity person gives to the guild pays. Especially when you see all the activities the Guild has to offer. THANK you members for donating your time. We also have members donating time we don't see. THANKS you also for your time donated. If you feel THANKFUL for a work shop, bee line, block to make, cookies to nibble, retreat to attend, meeting room ready when we arrive -----the list goes on. Please stop a moment and say THANKS to our worker bees. Special THANKS to Cindy Bender and all her helpers for taking care of the membership directory. See everyone at the guild meeting. janet

Doll Quilt Information

Tom Dopp will come in to pick up the doll quilts for this month. We will also be able to collect the quilts at our Dec. meeting, since the Marines will not be distributing the toys until the following week. I will not be able to come to the November meeting.

Thanks, Becky Dopp



November Birthdays

- Denise LaVoie 11/3
- Lee Hively 11/3
- Barbara Taylor 11/5
- Deborah Westover 11/6
- Joanne Slothower 11/10
- Sara Taylor 11/12
- Bonnie Gruver 11/13
- Wanda Sheaffer 11/18
- Mary Smith 11/18
- Ellen Whittington 11/20
- Nikola Grafnetterova 11/22
- Margaret Spivey 11/27
- Carol Wirth 11/28

Corrections to the booklet

Lani Brechbill email correction - dlbrech@dishmail.net

Ruth Mollack email correction rosecotge@embarqmail.com

Bonnie BiNgaman would like the spelling of her name corrected. (not Bigaman).

The March meeting will be held on Saturday March 8, 2008 with the 1/2 day workshop in the morning with Virginia. George will teach the all day workshop on Friday March 7, 2008. please change the dates in your booklet.

New members as of 10-13-07

Bonnie Black
620 Military Avenue
Baltimore, MD 21208
410-602-3633
lteach2athome@yahoo.com

Linda Dahlmann
518 Hilltop Circle
Greencastle, PA 17225
717-592-0632
girlscoutnuts@comcast.com

Larry Gore
2065 Orrstown Road
Shippensburg, PA 17257
717-530-5654
larrydg@embarqmail.com

Jean Koch
1370 Turkey Pit Schoolhouse Road
New Oxford, PA 17350
717-624-4977

Linda Rausch
3052 Oak Hill Road
Waynesboro, PA 17268
717-765-9690
pdldrausch@embarq.com

Please add these members to your
booklet.

Guild Library

Judie and I would like to sincerely thank all who have helped update our Guild library... Lee Hively and Helen Lagasse for getting us started. Special thanks to Charles Moreland for the new cart and wheels to really keep us rolling. Recent contributors: Nancy Bender, Sondra Mentzer, Mim Huffman and Bernice Somers; and all who have shared their books and love of quilting.

We invite all members, especially our newest ones, to "check out" our latest edition of The Chambersburg Quilt Guild Library. Our new hours are 12 noon to 12:45 and 15 to 30 minutes after the monthly meeting has adjourned. Books may be kept for a month but, since we have decided not to charge a dollar for unreturned books, we ask that you let us know if you wish to keep them longer and to renew them. You may call either one of us to do this. We also reserve the option of requesting the return of a book if it is needed by another member after the initial month.

A complete listing of current books, videos, etc. will be kept at the library. It is alphabetized according to title in each category. We hope you take advantage of our library and would love to hear your comments.

With Sincere Thanks,

Fran Chamberlin and Judie Svoboda



November Workshop

Our November morning workshop (9-Noon) will be a hands-on workshop creating fabric postcards which can be from very simple to highly creative taught by Sherry Whitford. You can learn various techniques that can be incorporated and which are allowed by the Post Office. Participants will leave with a supply list of essentials and fun additions for postcard making, a reference of available design & technique books, two to three designs to use and a smile on your face! Sherry makes all of this simple by providing a kit for \$5 which includes a postcard base, fabrics and ingredients to make and embellish the postcard and a choice of patterns. The cost of the workshop is \$15 to members, \$20 to nonmembers, not including the kit fee. We still have spaces available, so if you would like to take it, please call Missy Molino at 423-6694 or email her at quiltodyssey@supernet.com to reserve your space. This is sure to be a fun workshop!

Supply list for participants in the morning workshop:

- Pencil or pen
- Scissors
- Pins

Optional: small rotary mat, ruler and cutter

Any specialty fabrics, trims or threads you might want to use to experiment

Sherry needs a few (3 or 4) sewing machines for class for people to share. They can be straight or zig-zag. If you don't mind bringing your machine to share, we would appreciate it very much!

Swap Blocks

Anyone who has not had the opportunity to pick up instructions for one of the swap blocks may contact Nancy Bender for a copy. The blocks are due in January.

Christmas Block Exchange

Just wanted to remind everyone that the Christmas blocks for the annual exchange are due at the November meeting. You can also hand them in at the retreat if you are going to be there. Anyone who missed getting a kit, or who wants to make more blocks, please email or call Nancy Bender and a kit will be mailed to you. Thank you to all you have made and are making blocks.

Sunshine Notes

At Thanksgiving time we count our blessings. I would like to thank the following people for their assistance to the sunshine lady: Sue Frederick, Jan Gross, Janet Hartman, Nancy Heishman, Megan Music Joyce Randolph, Pat Reese Linda Schwalm, Barb Taylor, and Betty Zalepa who have made over 100 cards. Mim Huffman who keeps me informed and Linda Schwalm who creates the quilts.

Please keep Sondra Mentzer, Donna Widney, and Pam Donaldson in your prayers.

Mary Ellen Fairbairn had foot surgery.

Please contact Lee Hively at 267-3761 for those in need of sunshine or email nealhively@comcast.net

New Arrivals

Leilani Brechbill's twin granddaughters came on Oct. 9 at Harrisburg Hospital after their mothers 5 week stay. Danielle Robin was 6lb. 1 oz. 18 and 3/4 in. and Jessica Rene was 5 lb.7 oz and 18 in. All are home and Grandma is having fun each day helping Mommie take care of them!

Proposed Raffle Ticket Recipients

1. The Franklin County Quilt Documentation project is again being proposed as the recipient for the 2008 raffle ticket proceeds. The Guild is the sponsor of this long term project. Progress continues with fund-raising, but there is still a long way to go.

By the time the November Bee Line comes out, photography for the 200 selected quilts will be completed. Additional funds will need to be raised before the printer can proceed with the next phase of the book.

The Guild's policy is to contribute to a charitable or cultural endeavor. This project falls into the latter category. There is considerable interest and excitement about the book from personal standpoints and from its contribution to Franklin County's history. It is to our advantage to get the book finished as quickly as possible to avoid rising costs and to begin getting income from the sale of books. When that happens we will be able to "catch up" with organizations that we have not been able to assist for several years.

2. Cumberland Valley Breast Care Alliance

Sharon Brosius, one of the nurse educators, assists newly diagnosed individuals with health care referral, support groups, financial aid and free mammograms to those who need them. This nonprofit organization will celebrate its 11-year anniversary next month and focuses their efforts in 3 related areas--- education, mammagift (free mammograms at Summit Health) and assistance (monetary, care packages, family & patient reassurance). Call Sharon at 263-7191.

Laurel Run Fall Festival

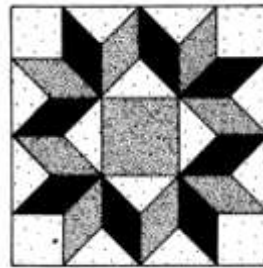
Thank you to Fran Chamberlin, Helen Legasse, Dottie Moreland, and Linda Schwalm for coming to the Laurel Run Fall Festival. The residents really enjoyed seeing the beautiful quilts brought by the ladies for display. Thanks to Nancy Bender for also providing some quilts for display. And special thanks to Roger Schwalm for transporting the quilt frames, set up and take down of the display - what would we ever do without a "quilty hubby" like Roger??? Again, many, many thanks to all who participated and made this such a fun afternoon!!

Judie Svoboda

Round Robin

Please remember to bring your finished Round to the meeting. If you are not able to come to the meeting have someone bring your box and pick one up for you.

If you have no one to pick up for you call (Helen 352-4339) so that I can make arrangements to get it from you. Thank you



Refreshments

November – Wanda Sheaffer, Donna Widney, Amy Hetz, Virginia Tarner, Betty Bell and Marilyn Collins

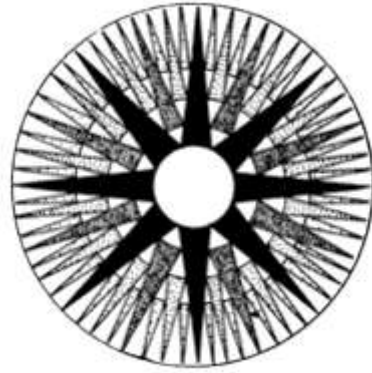
November 26th, 2007 Quilt bee

Directions to Ruth Mollacks's house
146 Highfield Lane North
Chambersburg, PA 17201
717-263-3761

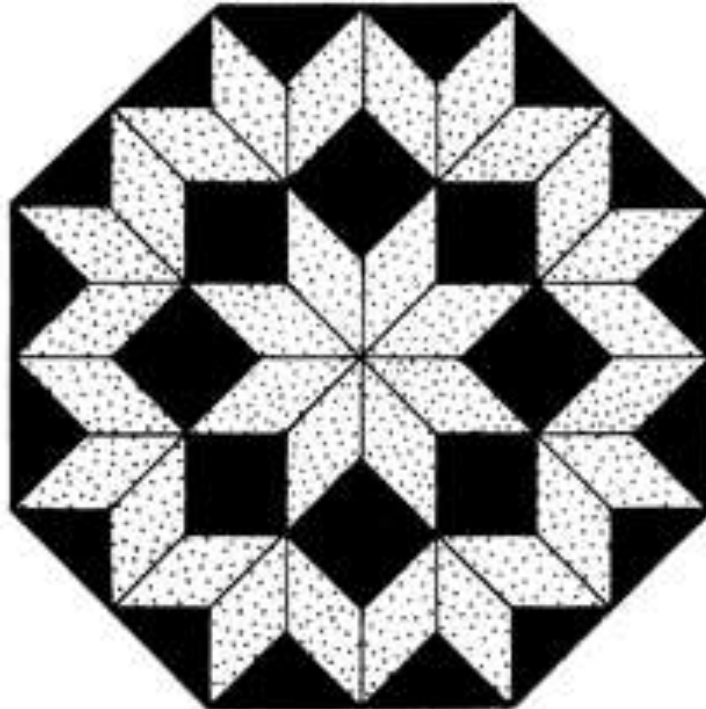
Driving along Route 30, Lincoln Way,
from the East, turn right onto Walker
Road. From the West turn left onto
Walker road. (Long John's is on the corner)

Follow Walker Road (in back of the
Sheraton 4 Points).

Make a left onto Limkiln Drive. (the Best
Western is on the corner). Go 3 blocks on
Limkiln Drive, make a right onto High-
field Lane North. Go to number 146, a
red brick with blue siding above the ga-
rage door and by the front door.



On Sunday October 14th, 2007
there was an article in the *Public
Opinion* newspaper about our
own Donna Gilbert and her
“Precious Memories” miniature
quilt. “Precious Memories” was
accepted as a finalist in the Hous-
ton Quilt Show. Donna, we are
proud of you!



The Sew'n Place is pleased to present the newest Pfaff Sewing and Embroidery machine!



PFAFF

creative vision™

Embroider up to 350mm x 360mm

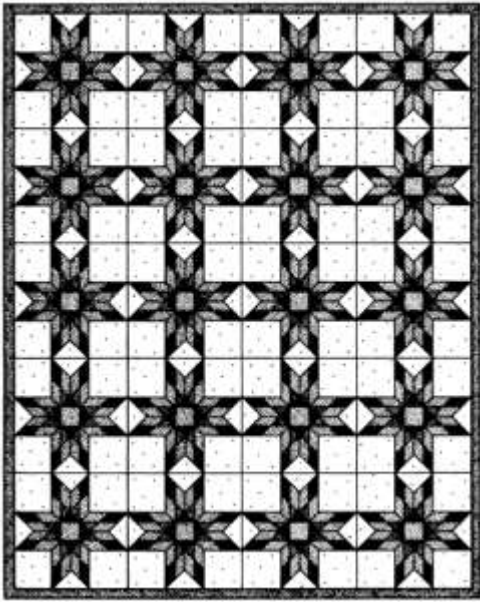
That's almost 14 inches square!

- * **Sew perfectly every time with Pfaff's Famous Dual Feed**
- * **No more thread "Jams" with the Creative Vision's New Jam-proof Drop-in bobbin!**
- * High definition color touch screen gives beautiful views of your work!
 - * over 500 built-in stitches
- * Perfect positioning allows you to embroider exactly where you want every time!

There are too many new and innovative **features to list here. Stop by The Sew'n Place** for a complete demonstration of this wonderful machine!

The Sew'n Place is
Chambersburg, Pennsylvania's
Authorized Pfaff Dealer!

The Sew'n Place
955 Wayne Avenue
Chambersburg, PA 17201
(717) 263 - 5606
www.sewnplace.com



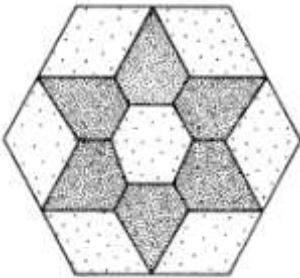
*Chambersburg Quilt Guild, Inc.
Chambersburg, Pennsylvania*

*MEETINGS: 2nd Saturday of each month—
September through May*

*TIME: 12:00 noon—Social Gathering
1:00 pm Business Meeting/Program*

*PLACE: Trinity Evangelical Lutheran
Church
26 West Commerce Street
Chambersburg, PA 17201*

**November 2007
Issue 4**



*Cindy Bender, Editor
PO Box 1426
Chambersburg, PA 17201*

